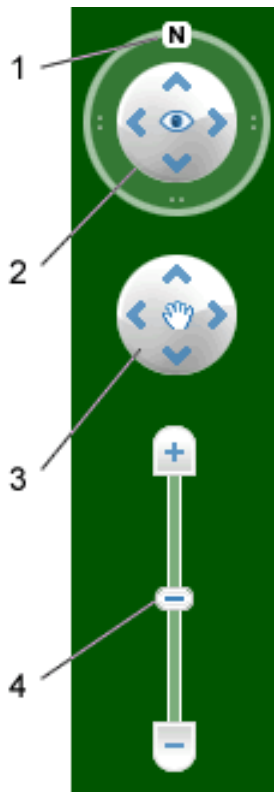


This guide aims to offer some tips and instructions to gain the most from your Vscapes experience in Google Earth

BASIC CONTROLS

Google Earth offers the opportunity to view a building/landscape from any eye point above the Earth's surface. Similarly, you can even view a building from within the building itself. The controls to do this can be a little sensitive but this guide might offer some help to get the best out of the controls.



1. Click the north up button to reset the view so that north is at the top of the screen. Click and drag the ring to rotate your view.
2. Use the Look joystick to look around from a single vantage point, as if you were turning your head. Click an arrow to look in that direction or continue to press down on the mouse button to change your view. After clicking an arrow, move the mouse around on the joystick to change the direction of motion.
3. Use the Move joystick to move your position from one place to another. Click an arrow to look in that direction or continue to press down on the mouse button to change your view. After clicking an arrow, move the mouse around on the joystick to change the direction of motion.
4. Use the zoom slider to zoom in or out (+ to zoom in, - to zoom out) or click the icons at the end of the slider. As you move closer to the ground, Google Earth swoops (tilts) to change your viewing angle to be parallel to the Earth's surface. You can turn off this automatic tilt (Tools > Options > Navigation > Navigation controls; Mac: Google Earth > Preferences > Navigation > Navigation controls).

TOP TIPS

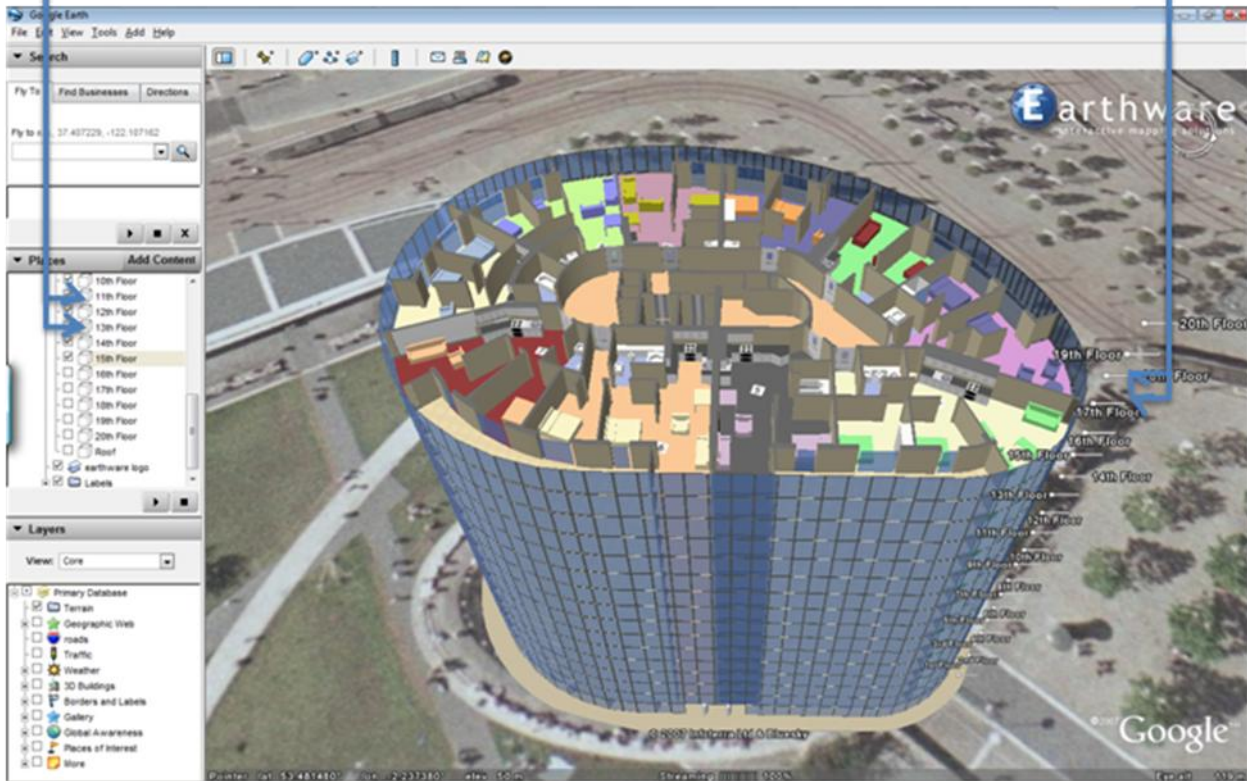
1. If you have a mouse with a centre scroll button, this can be used for zooming in and out.
2. Changing the mouse sensitivity can help to navigate with more control. To do this in Google Earth click on "Tools" and "Options". Click on the "Navigation" tab and drag the setting on mouse sensitivity to the far left.
3. In order to gain more control when navigating across a horizontal plane, we would suggest using the joystick described above
4. If you are using a lot of Google Earth tours, or like to navigate really effectively through the interior of a building model, you may wish to think about purchasing a 3D Navigator.

NAVIGATING ROUND A 3D BUILDING

Where the Vscapes implementation includes 3D interior modelling this can be accessed by taking the building apart and then navigating around the building using the controls above. This can be demonstrated using a residential apartment block.

NAVIGATING AROUND FLOORS: Click on the check boxes in the panel on the left to add and remove floors to reveal 3D floorplans for each floor

FLOOR INFORMATION: Click on white pointer by the floor label to open an information box for each floor



TOP TIPS

1. Use subtle movements when navigating within the building as it is possible to get confusing views (e.g. truncating several floors at the same time).
2. It is probably easier to view individual apartments either from the vertical axis, or the horizontal axis. Views in between are more difficult to control.
3. When navigating around the building, it is more difficult with a traditional mouse. Earthware offers to create smaller video walk throughs of parts of the building or individual apartments and rooms.
4. If you would like to view the building anytime you open Google Earth, you can save this by click and dragging the property in the left hand "Places" pane